

10ZiG Technology.

---

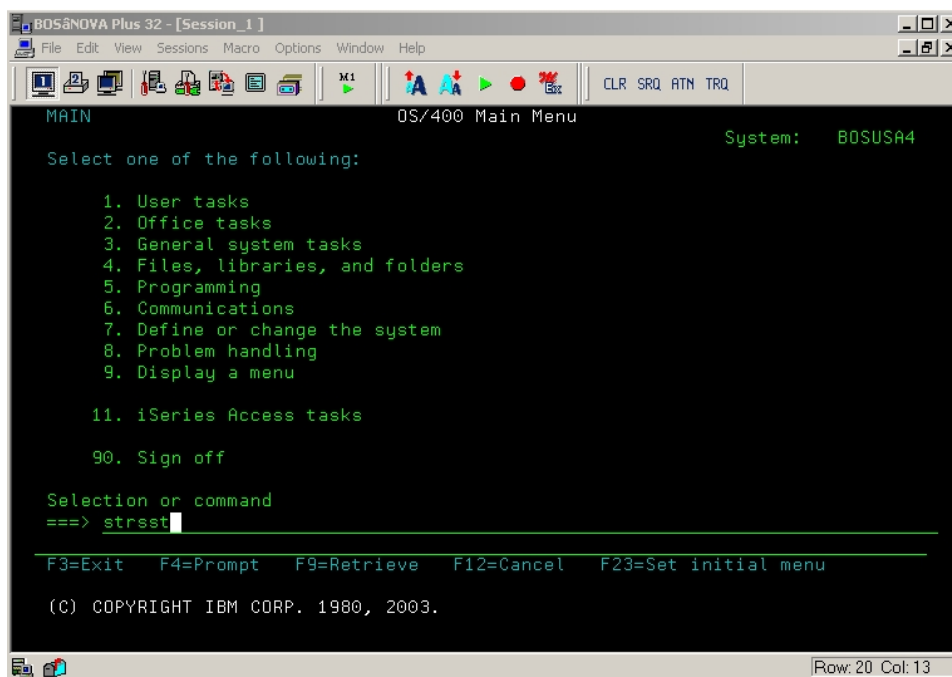
iSeries Twinax Console Configuration

# Quick Start Guide



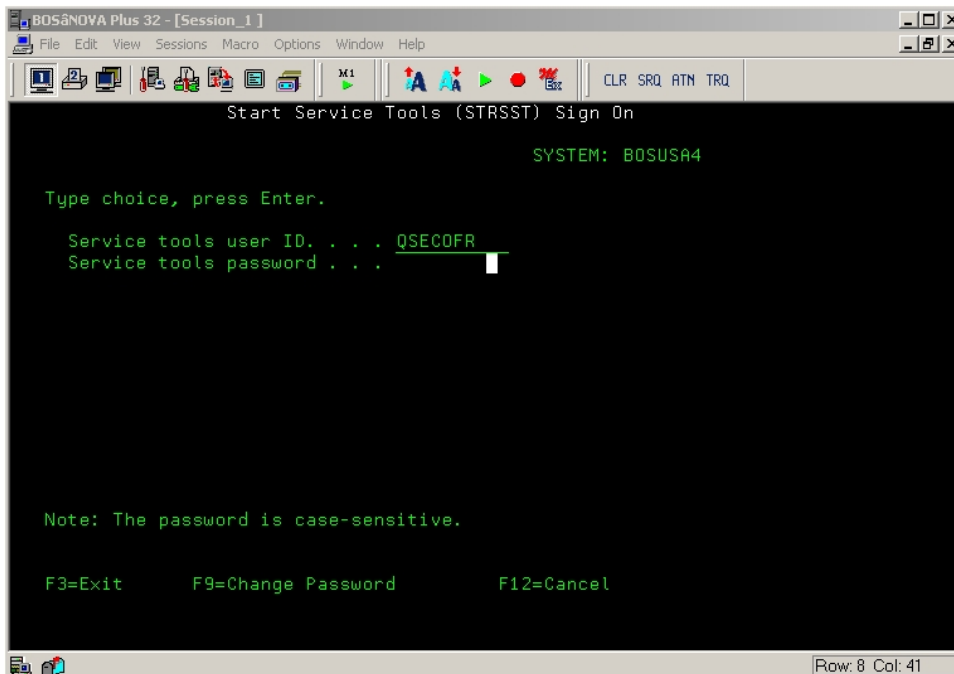
## Configuring your iSeries for a Twinax Console

1. Run the command STRSST from a command line.

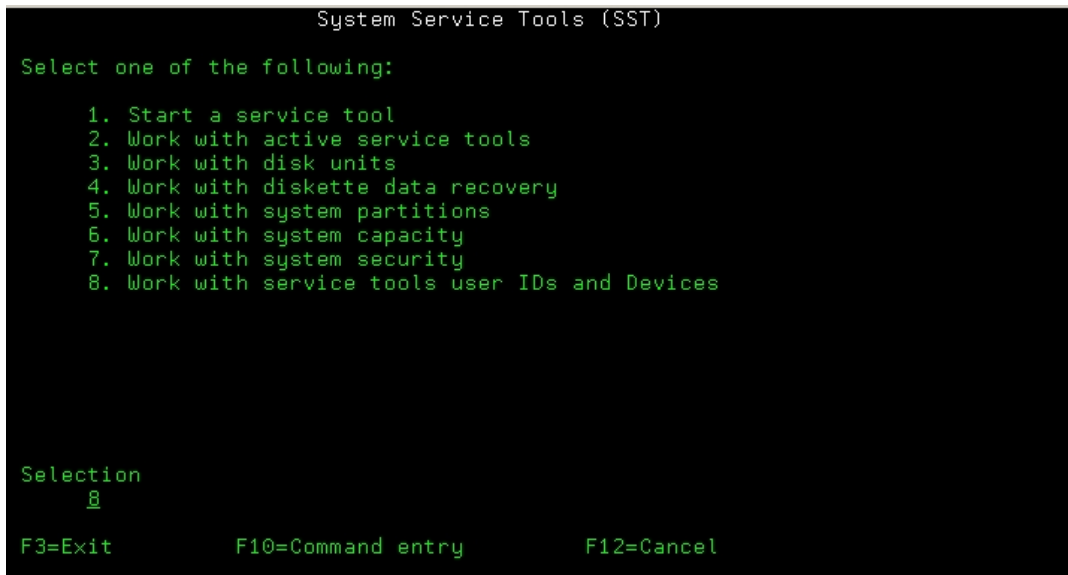


```
BOS/NOVA Plus 32 - [Session_1 ]
File Edit View Sessions Macro Options Window Help
MAIN OS/400 Main Menu System: BOSUSA4
Select one of the following:
1. User tasks
2. Office tasks
3. General system tasks
4. Files, libraries, and folders
5. Programming
6. Communications
7. Define or change the system
8. Problem handling
9. Display a menu
11. iSeries Access tasks
90. Sign off
Selection or command
==> strsst
F3=Exit F4=Prompt F9=Retrieve F12=Cancel F23=Set initial menu
(C) COPYRIGHT IBM CORP. 1980, 2003.
Row: 20 Col: 13
```

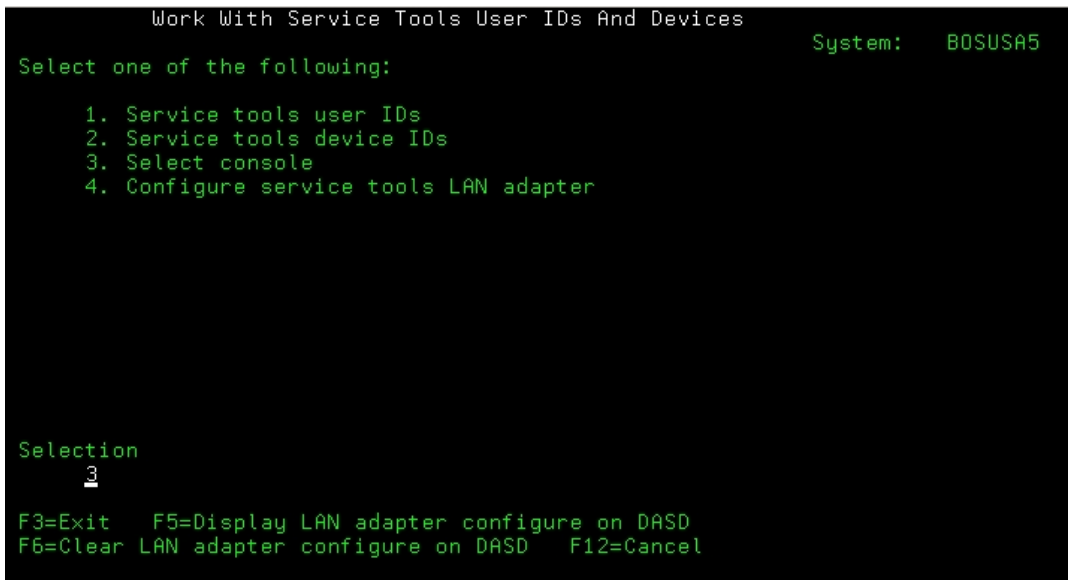
2. Sign on using a DST user ID and password



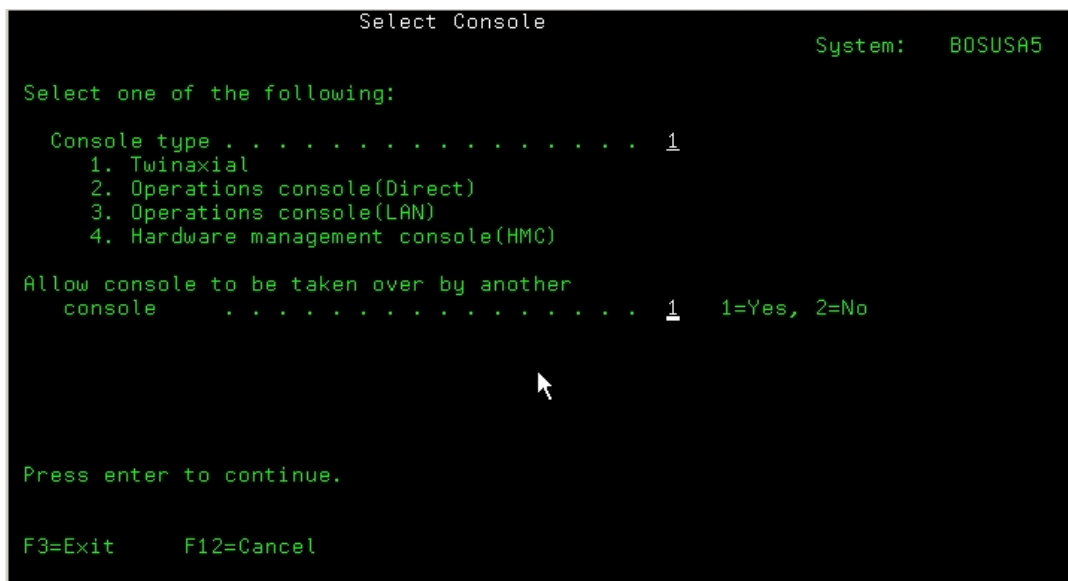
3. Take option 8 – Work with service tools user IDs and Devices



- 4. Take option 3 – Select Console



- 5. Select Console Type 1 - Twinaxial



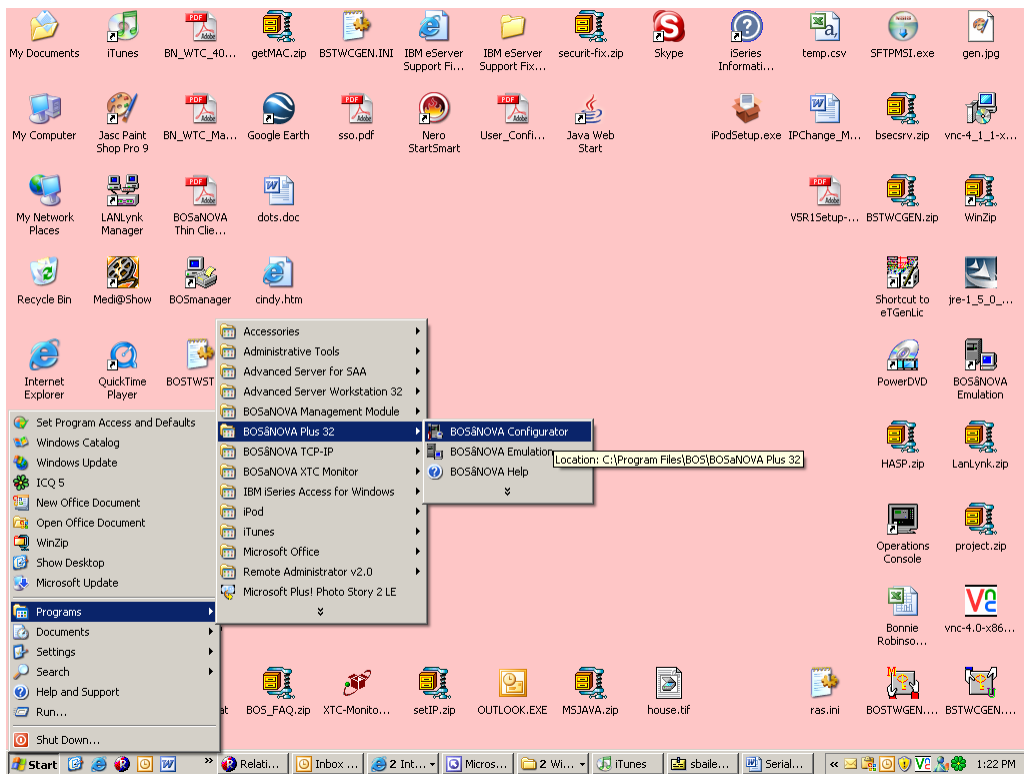
- 6. Power down iSeries – iSeries is now configured for twinax console upon next IPL.

IPL iSeries from panel.

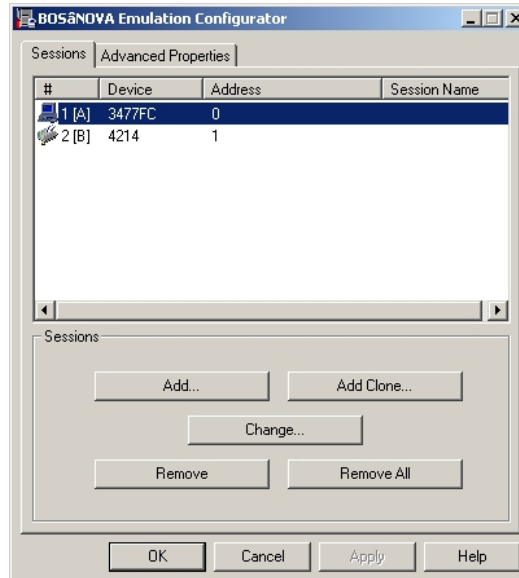
# Section 2

## Configure the Twinax Console

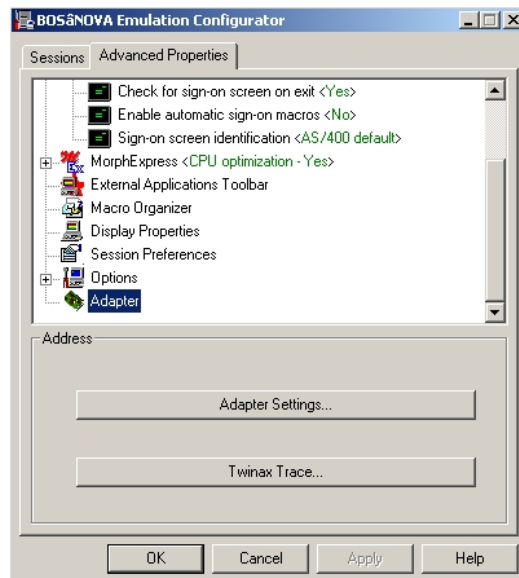
1. Access the Bosanova Plus 32 Configurator through the menu option as seen below:



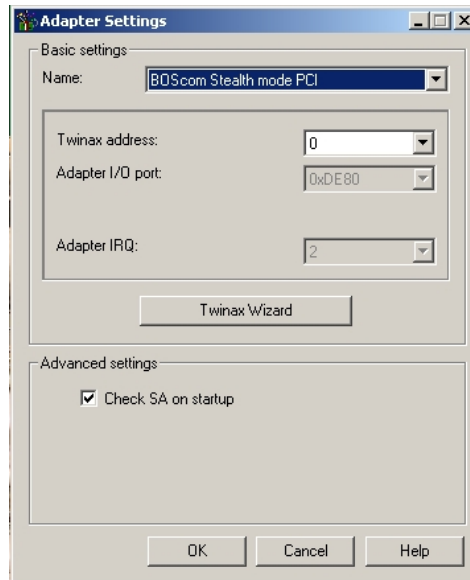
2. Select the Advanced Properties Tab



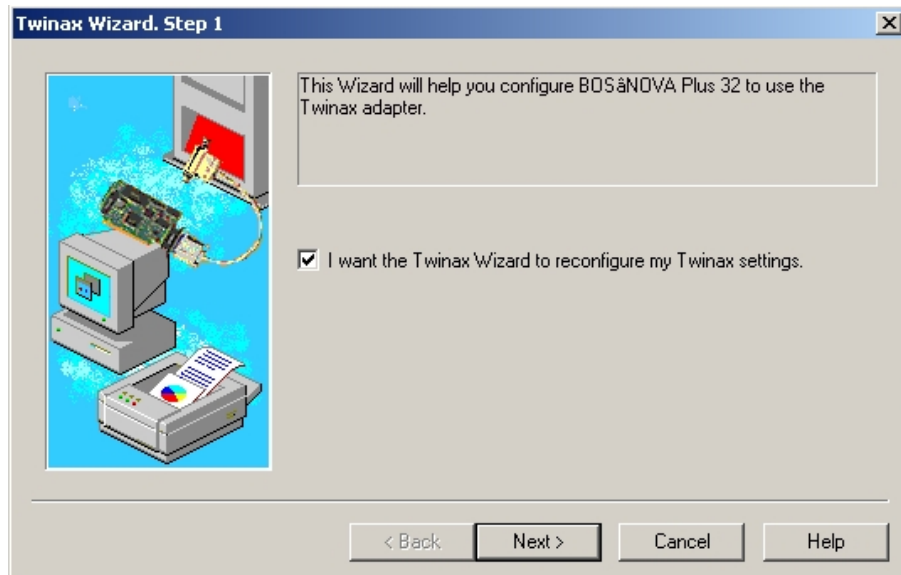
3. Go all the way down to Adapter and then select Adapter Settings



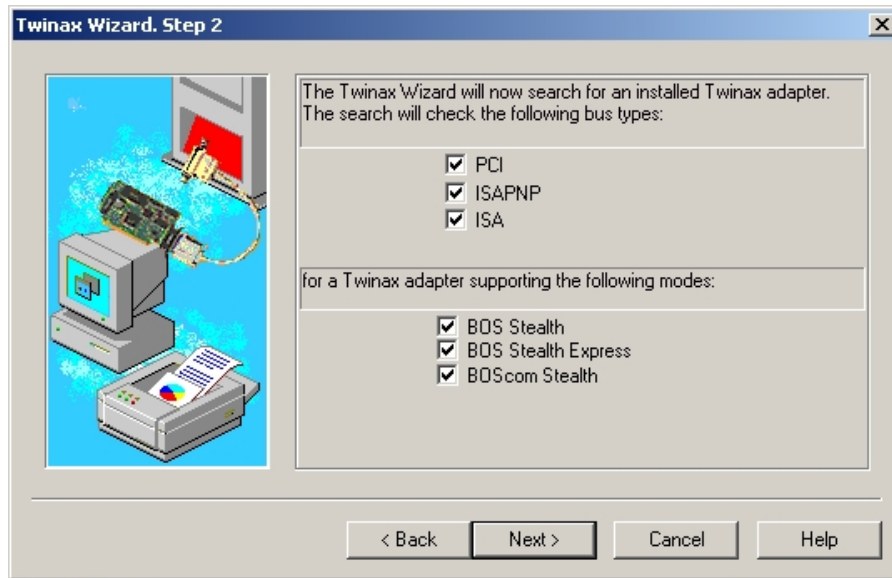
4. Select Twinax Wizard



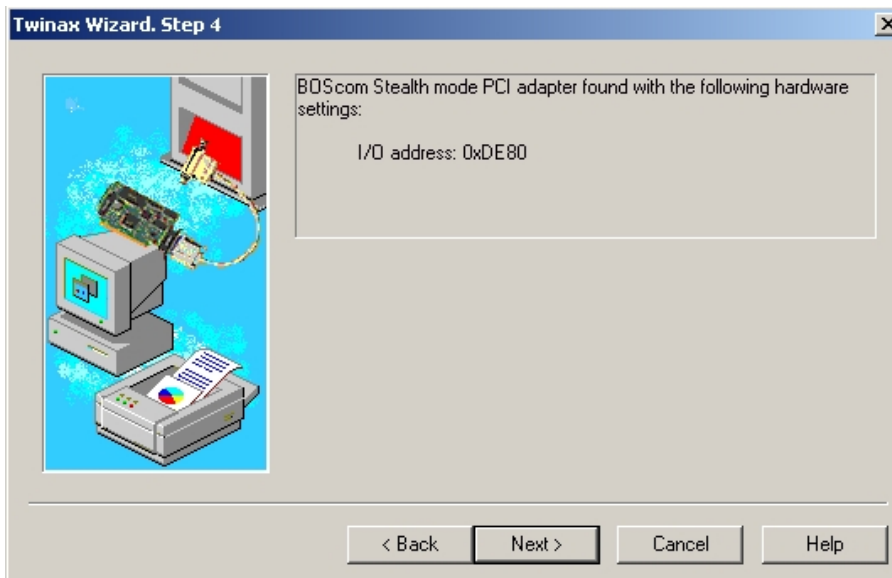
5. Select Next



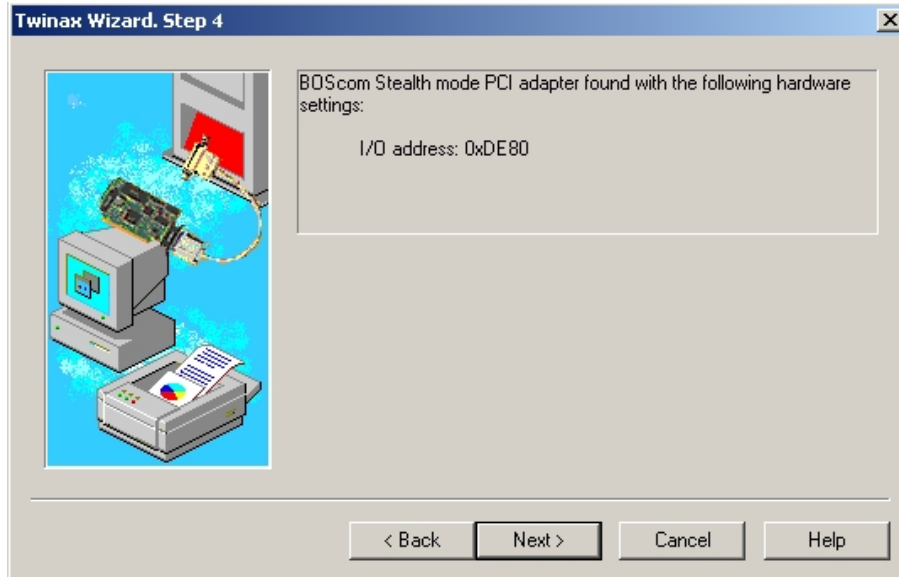
6. Select Next



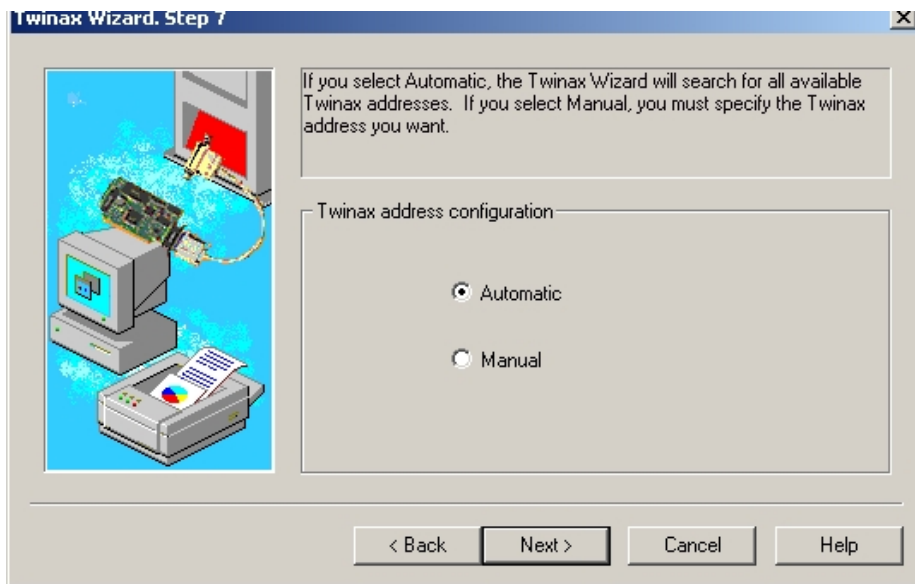
7. Select Next



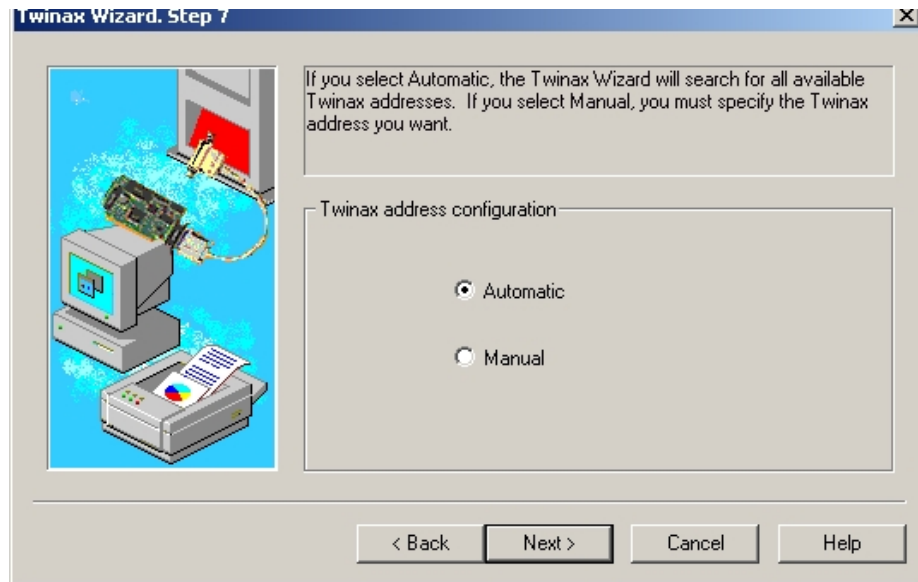
8. Select Next



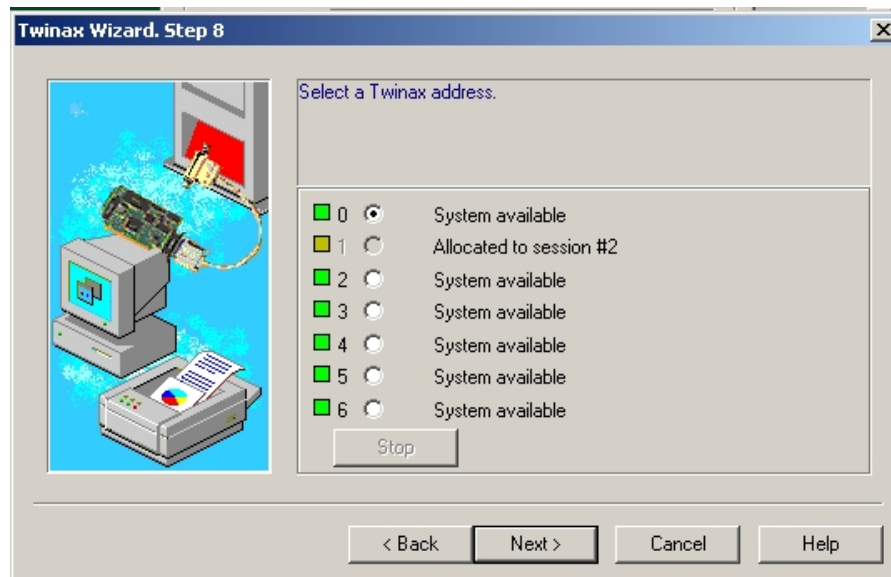
9. Select Next



10. Select Next

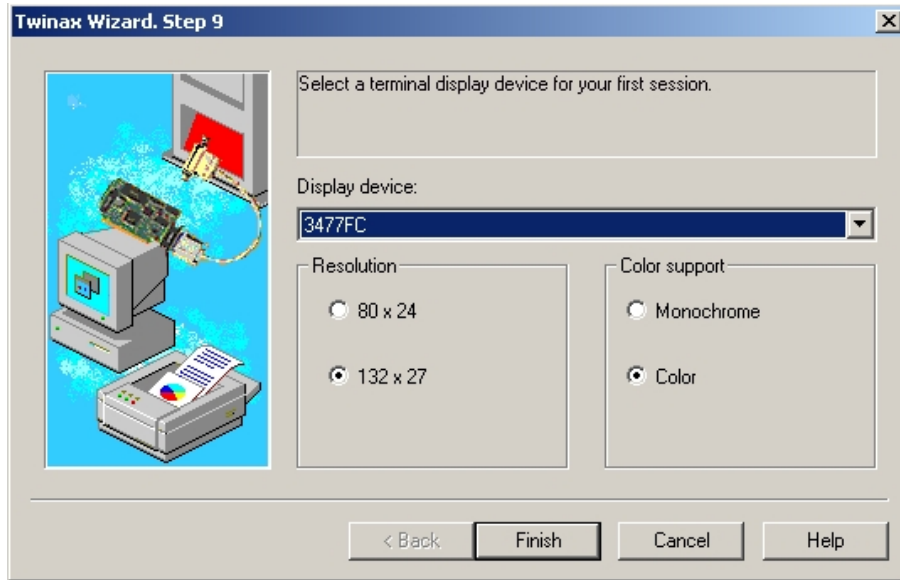


11. Console must be at address 0

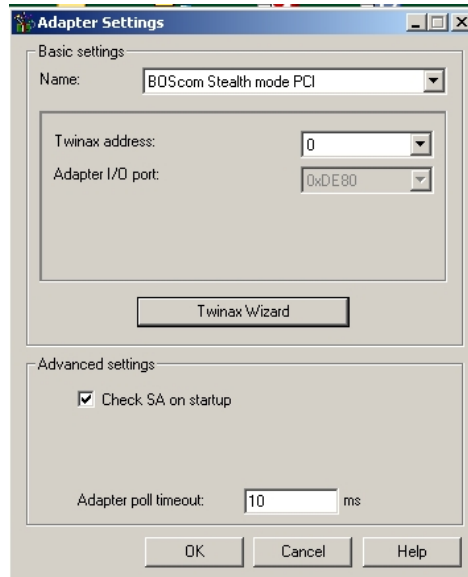


12. Select Next

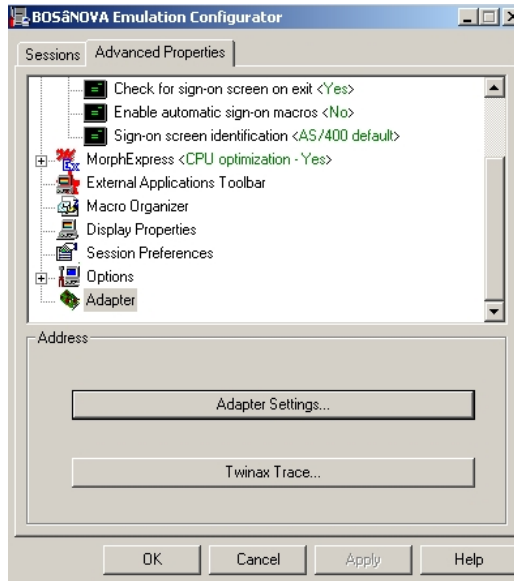
13. Select Finish



14. Select OK on the Adapter Settings



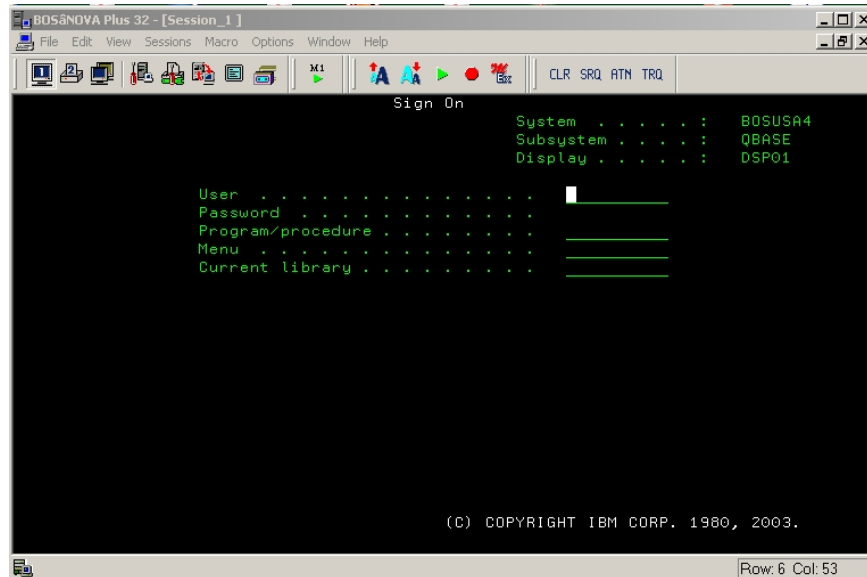
15. Select OK on the Bosanova Emulation Configurator



16. Double click on the Bosanova Emulation ICON on the desktop



1. Leave display session open and once IPL completes console will display.



**NOTE:**

**If write protection is enabled, changes made must be committed or will be lost. Double click on the Flash Disk Write Protection ICON on the desktop and select Commit Changes.**

