

10ZiG Imaging Utility

The 10ZiG Image Utility creates a bootable USB thumb drive to be used to restore an image on a 10ZiG thin client. The size of the USB thumb drive must be at least double the size of the DOM (flash drive) on the thin client.

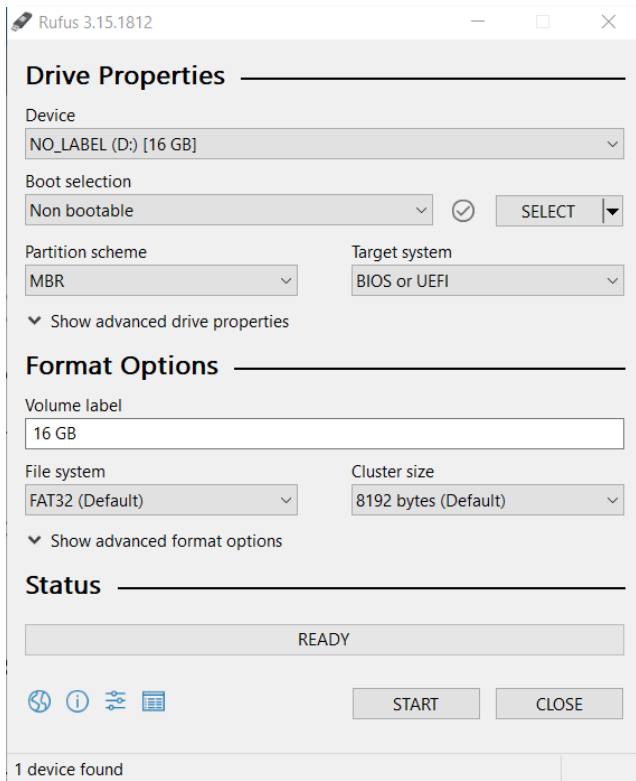
Many USB thumb drives come with a hidden partition which must be removed before the utility will work to restore the image. If the thumb drive does not boot to the recovery menu, there is most likely a hidden partition. SanDisk and newer Kingston USB thumb drives have a hidden encryption partition.

Creating USB Thumb Drive

On a Windows PC, download and run a copy of the disk utility “Rufus”:

[Rufus](#)

Open the utility and format the USB thumb drive as “Non bootable”, and FAT32:

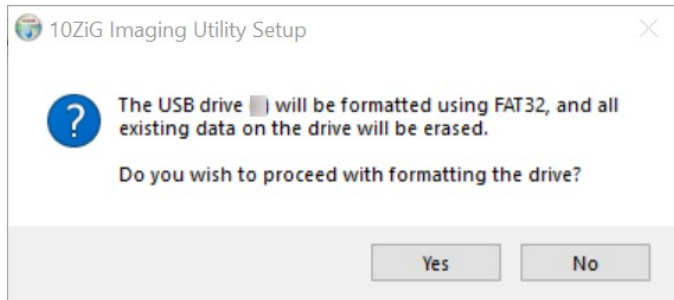
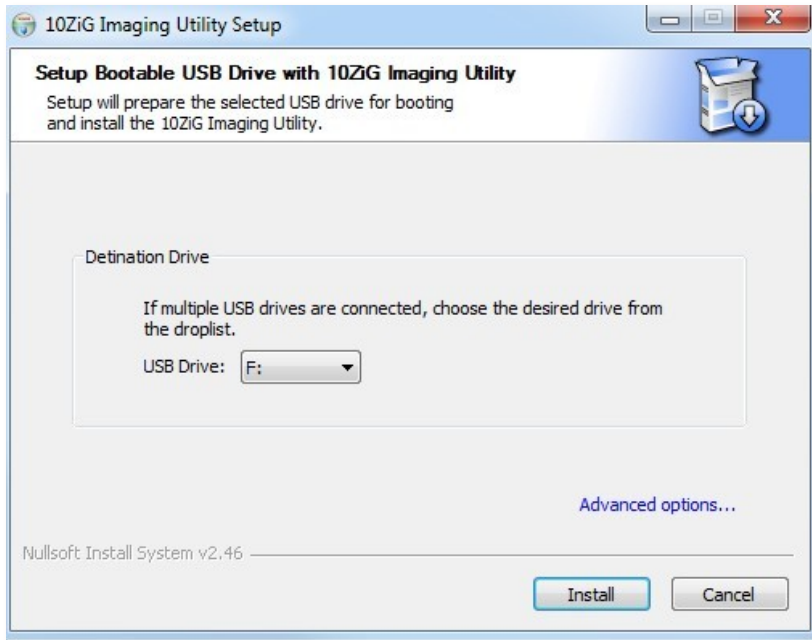


Download and run the 10Zig Imaging Utility executable

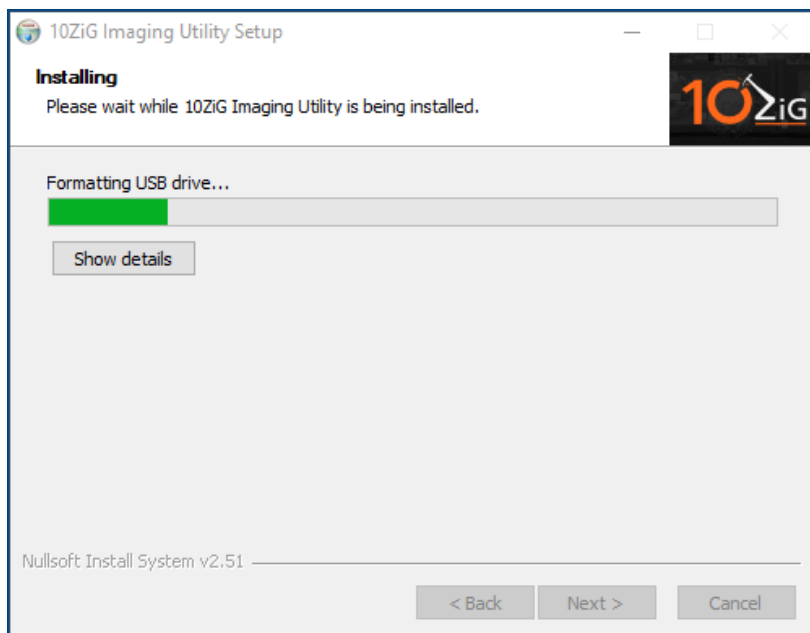
[TzImqUtil_setup.exe](#)

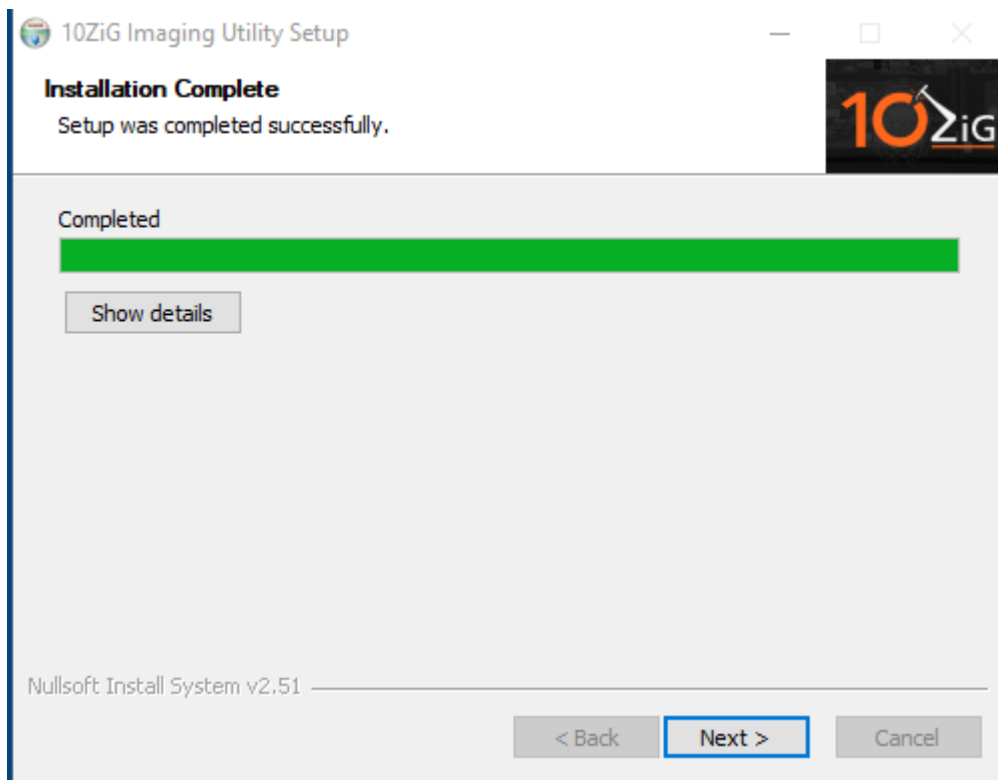
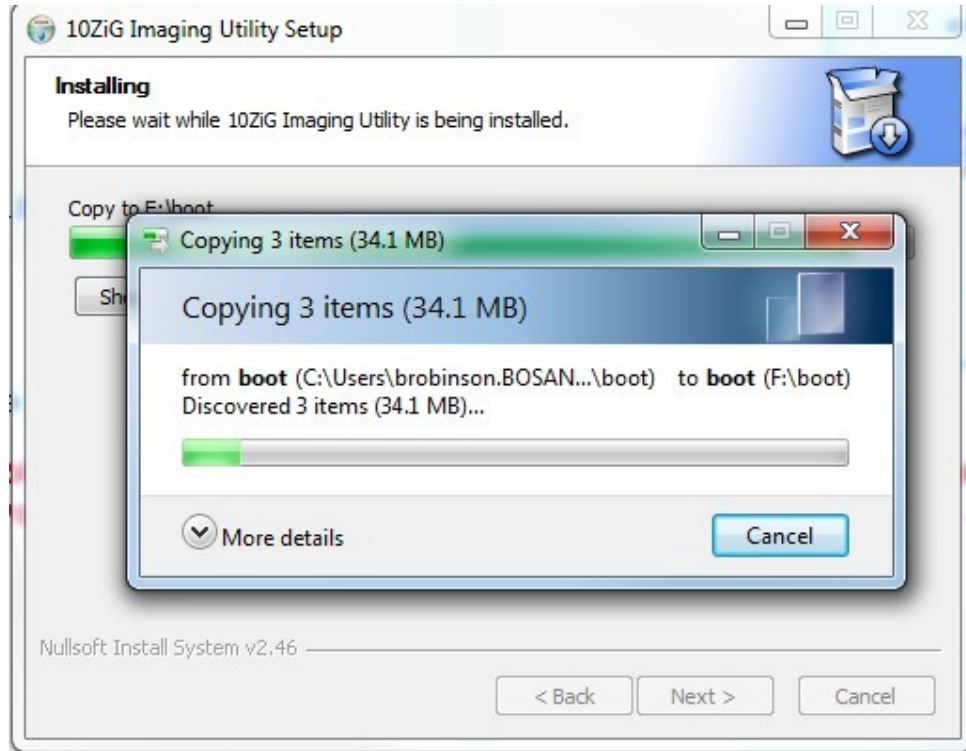
Select the correct USB Drive to create the bootable USB thumb drive and select **Next**

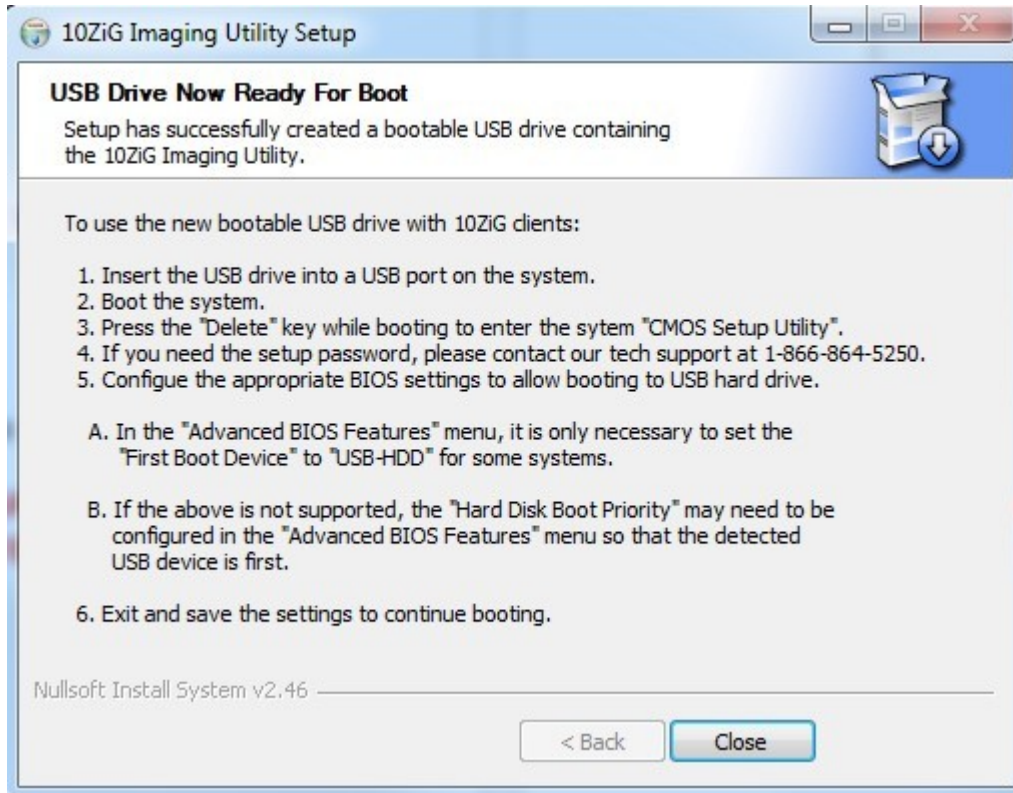
PLEASE BE AWARE, THIS UTILITY WILL ERASE EVERYTHING ON THE USB THUMB DRIVE



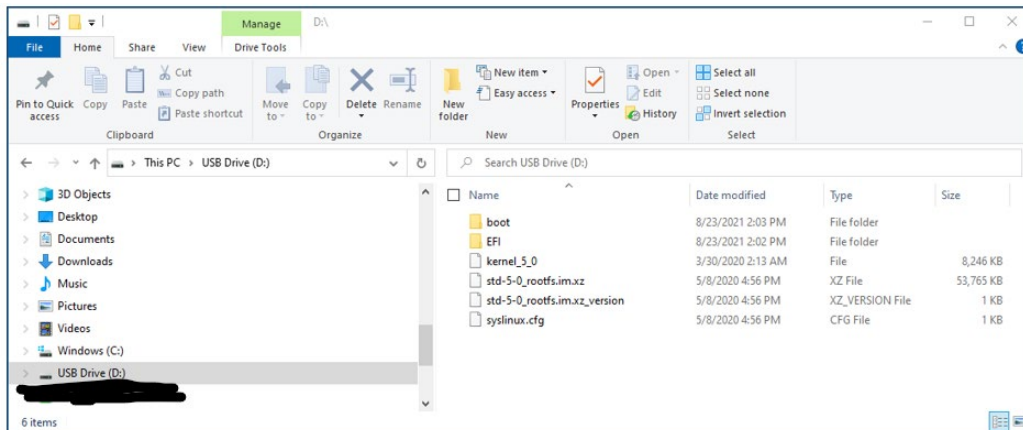
**REMINDER!!
FORMATTING WILL ERASE EVERYTHING
ON THE USB THUMB DRIVE**







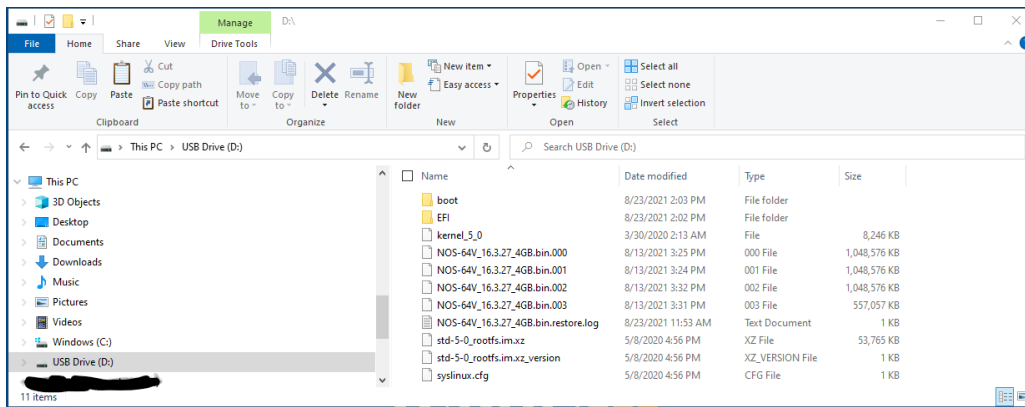
When completed, your USB drive will contain a "boot" folder, and should look like this:



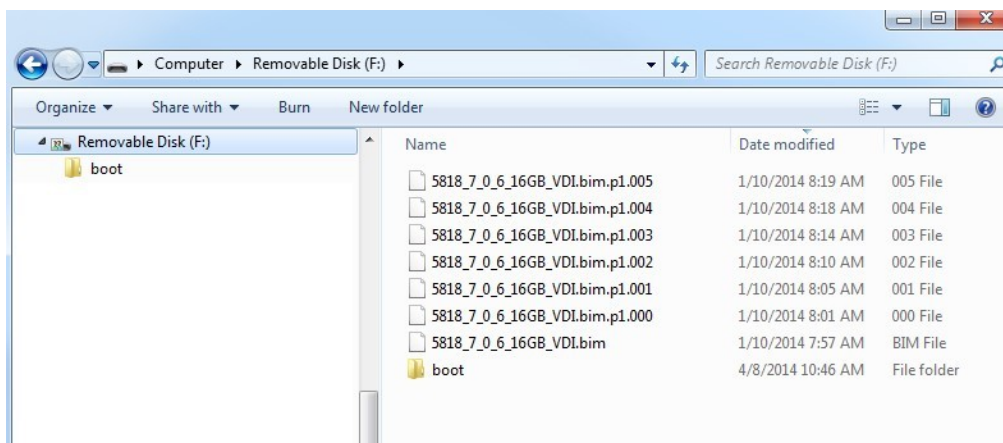
Copying Image to USB Thumb Drive

Copy the binary or compressed image to the USB thumb drive.

The example below is a binary image that was downloaded from 10ZiG's support site, and then copied to the thumb drive for purposes of installing the image.



The example below is a compressed image that was backed up via the 10ZiG Manager and then copied to the thumb drive for purposes of restoring the image.



Restoring or Backing up an Image from a USB Thumb Drive

To set the Disk Boot Priority to USB the USB thumb drive must be in the thin client when booted into the BIOS.

BIOS password is **10ZIG** all caps.

Hardware model **55XX** – press DEL to enter BIOS – Advanced BIOS Features – set Hard Disk Boot Priority – move USB to top of the list and set the first boot to USB-Zip. F10 to Save and Exit. You can then use the F12 key to access the boot menu and select the USB thumb drive.

Hardware model **56XX** – boot the thin client with the USB thumb drive in it and press DEL to enter BIOS – Advanced BIOS Features – Hard Disk Boot Priority – move the USB to the top using the + or - key. F10 to Save and Exit. You can then use F12 to access the boot menu to select the USB thumb drive.

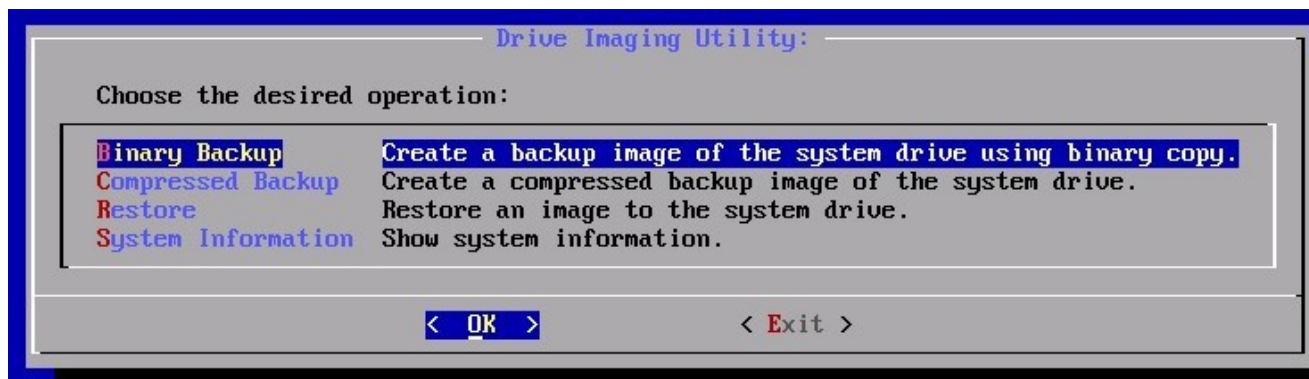
Hardware model **58XX, 58XXq, 44XX, 45XX, 78XXq, 77XX, 59XXq and 99XX** – boot the thin client with the USB thumb drive plugged in and press ESC after the post beep to enter the BIOS – select Boot Manager and select the USB thumb drive. **If the unit will not boot to the USB thumb drive, check to see if it has a hidden partition.**



Hardware models **46xxq, 6000q and 6100** - These are all UEFI units. To access the setup use the ESC key immediately after the post beep. Go to the boot manager and select the USB thumb drive.

Hardware model **68XX** – boot the thin client with the USB thumb drive in it and press F2 to enter the BIOS - enter password and continue. Go to Boot and then to Legacy and then Boot Type Order and make sure USB is at the top of the list. F10 save and exit. Press F12 to access boot menu and select the USB thumb drive.

The thin client will boot from the USB thumb drive to a Drive Imaging Utility menu.





Drive Imaging Utility

Choose the desired option:

Binary Backup – create a backup image of the system drive using a binary copy.

Compressed Backup – Create a compressed backup image of the system drive.

Restore – Restore an image to the system drive

System Information – Show the System Information

Each option will present a second menu to select restoring or saving the image to an attached USB thumb drive or to the network share (SMB)

The directory is presented – Use the up-arrow key or tab key to enter the section on the right that shows the recovery files - select the desired image to restore (spacebar to select). For binary image it will have an extension of .bin; for compressed it will have an extension of .bim or .bim.000. Select only the base file as it will direct the installation of all the associated files. Once you have selected the file, it will show at the bottom of the screen. Continue with the restore.



10ZiG Technology Limited
Headquarters US
23309 N 17th Drive – Ste 100
Phoenix, AZ 85207

Phone 866-865-5250
Fax 623-516-8697

support@10zig.com
sales@10zig.com
www.10zig.com

Headquarters UK
7 Highcliffe Road
Leicester LE5 1TY
UK

Phone 44 116 2148650
Fax 44 116 2148651

support@10zig.eu
sales@10zig.eu
www.10zig.eu

October 7, 2021