

WELCOME TO

REPURPOS™

10ZiG®



TABLE OF CONTENTS



3

About This Document

3

Building the RepurpOS USB Boot Key

5

Booting from the RepurpOS USB Boot Key

6

Running RepurpOS Live from the USB Boot Key

7

Customizing and Capturing your RepurpOS Boot Key Installer

8

Installing RepurpOS from USB Boot Key to a Local Legacy Hard Disk

9

Securing your RepurpOS Environment

11

Creating a Template from the RepurpOS USB Boot Key Using 10ZiG Manager

13

UEFI Secure Boot

ABOUT THIS DOCUMENT

Welcome to RepurpOS™

This installation and setup document guide is an introduction to getting started with our No-Hassle 10ZiG Repurposing Software!

In here, we'll walk you through building your installer boot key to running RepurpOS "live" from the boot key, all the way to installing it to an existing or legacy device hard drive.

Any bumps in the road? 10ZiG is here for you! Simply reach out to our helpful and friendly Tech Support Teams at support@10ZiG.com (USA) and support@10ZiG.eu (EMEA).

Prefer to call? Contact us > [HERE!](#)

We're happy to assist!

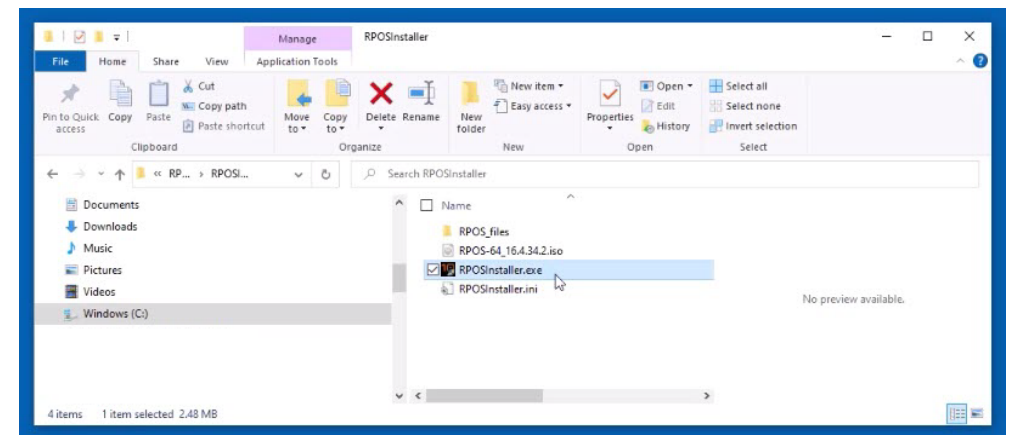
Building the RepurpOS USB Boot Key

1. Follow the link or QR code below to download the RPOS installer.



10zig.com/RepurpOS-Welcome

2. Once downloaded from the 10ZiG website, run the RPOS installer to build your boot key.





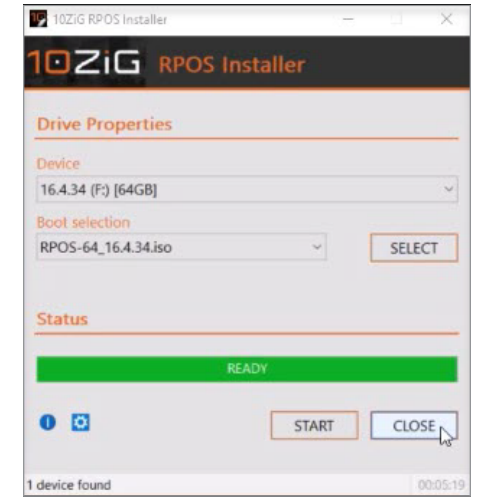
3. Select the USB drive to build your boot key onto.



4. Select the ISO disk image to write to the RepurPOS boot key.



5. The boot key build process in motion.



6. The USB boot key built and ready.

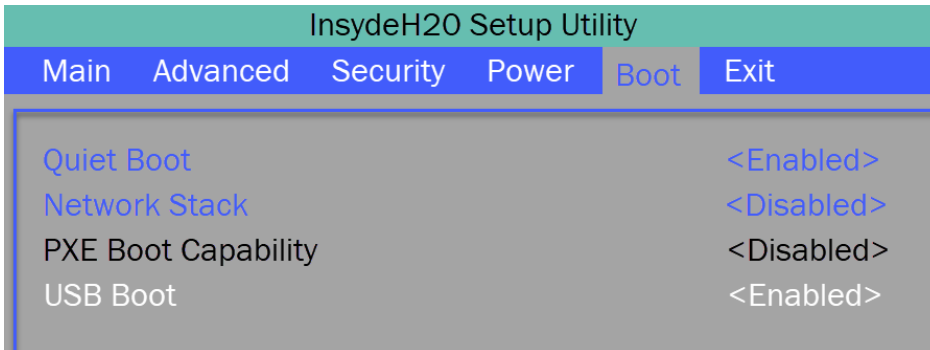


Booting from the RepurpOS USB Boot Key

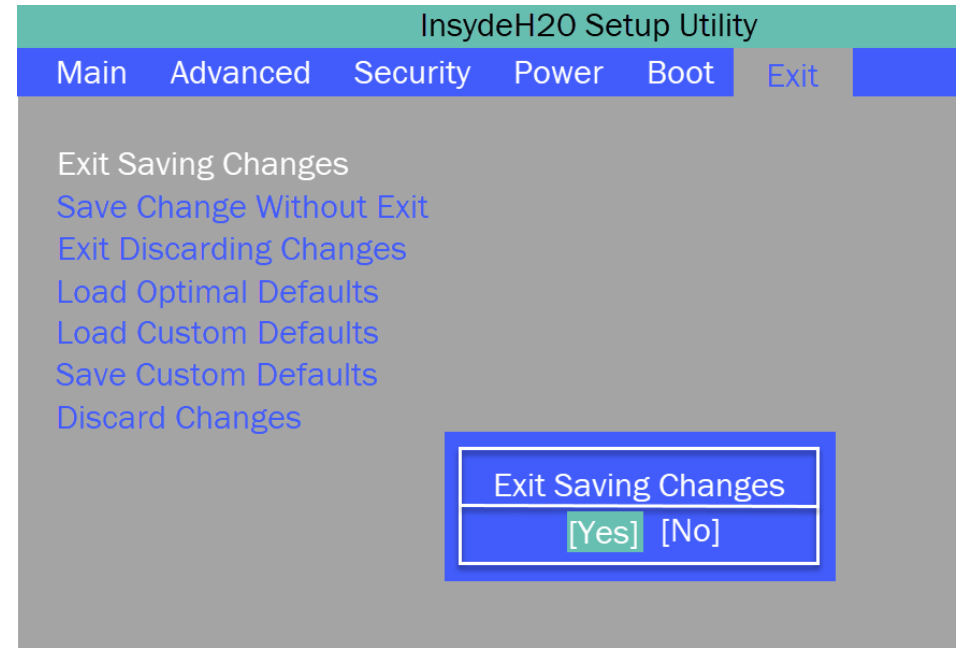
Boot the legacy device and modify the BIOS to boot from the RepurpOS USB key. Enter the BIOS by pressing the ESC key once you hear the boot beep.

[Click this link for information on “UEFI Secure Boot.”](#)

Navigate to “Boot” menu option and set “USB Boot” to enabled.



Press “F10” to “Exit Saving Changes”

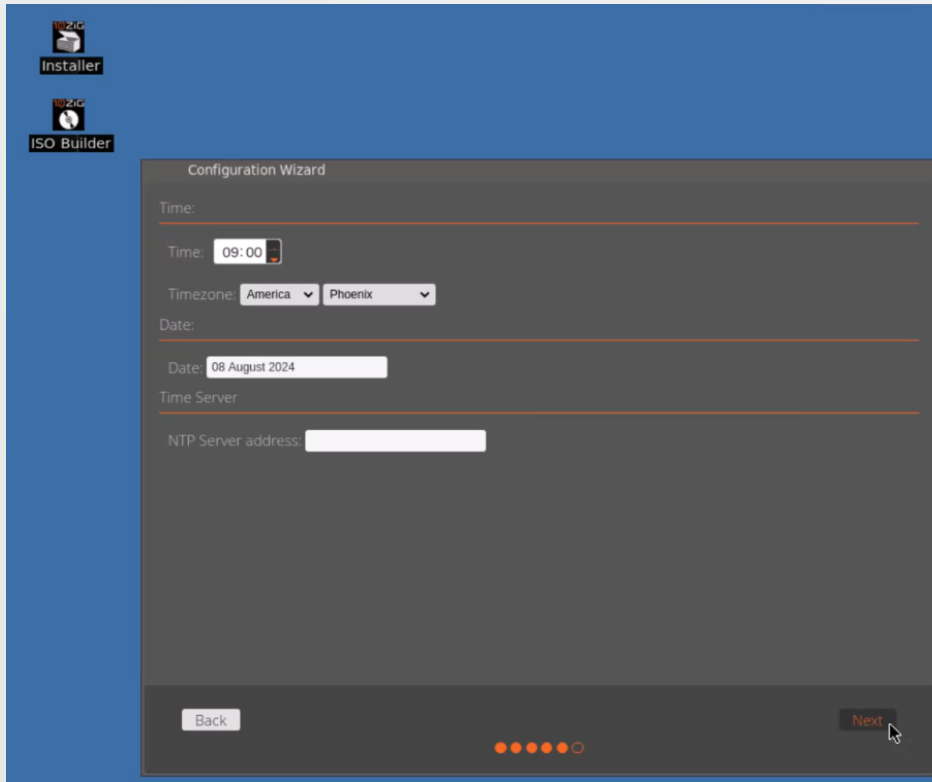


RepurpOS booting from the USB key.

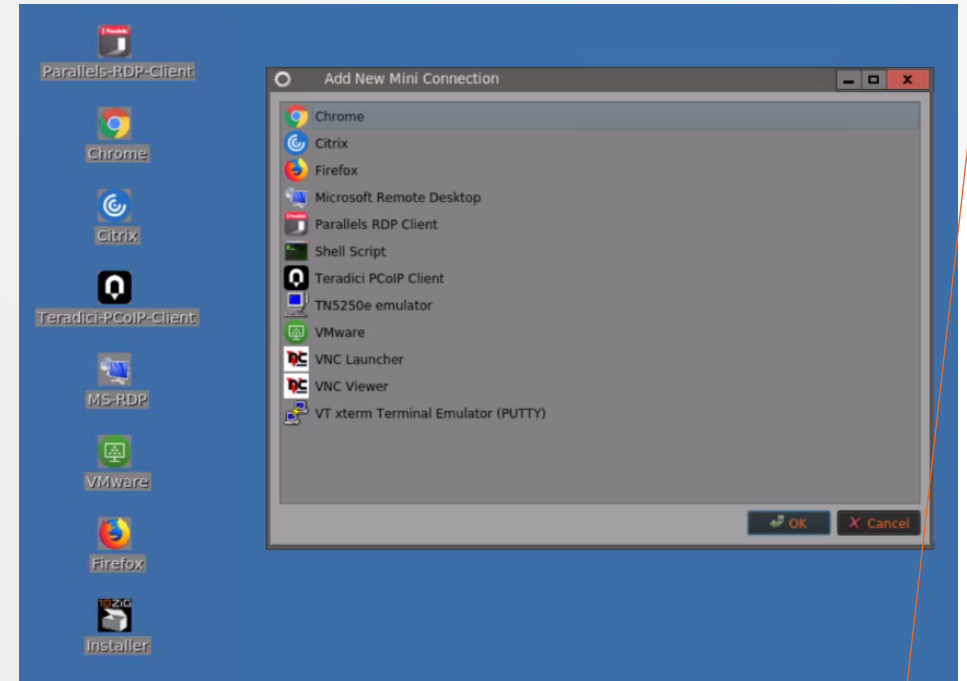


Running RepurpOS Live from the USB Boot Key

Inside the “Configuration Wizard” on first boot.



You can configure local apps on USB boot key in “Live” mode.



Customizing and Capturing your RepurpOS Boot Key Installer

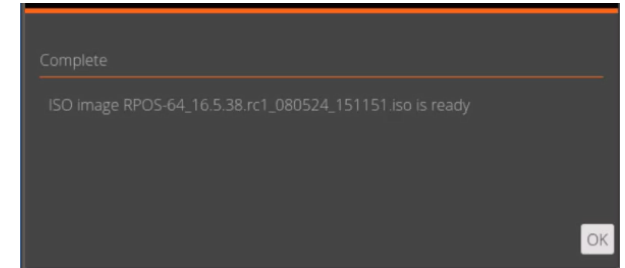
Running the 10ZiG ISO Builder from the desktop allows you to fully customize the look, feel and configuration of the RepurpOS operating system on the Boot Key and then capture the whole image as a new ISO, to a local removable USB drive.

You can use the captured ISO on the key as either a backup for the customized RepurpOS Boot Key or build additional machines with the same custom image. It allows you to prototype your individual RepurpOS machines before you either deploy them or use them in your test labs.

Selecting the USB drive to write the ISO Image to



Once complete, the new ISO file is available.





Installing RepurpOS from USB Boot Key to a Local Legacy Hard Disk

Once you're ready, you can install from the USB key to the local legacy hard disk. This will port everything over from the key to the fixed drive, including all changed settings and any configured applications/connections carried out in "Live" mode.



The RepurpOS installation to fixed disk in progress.



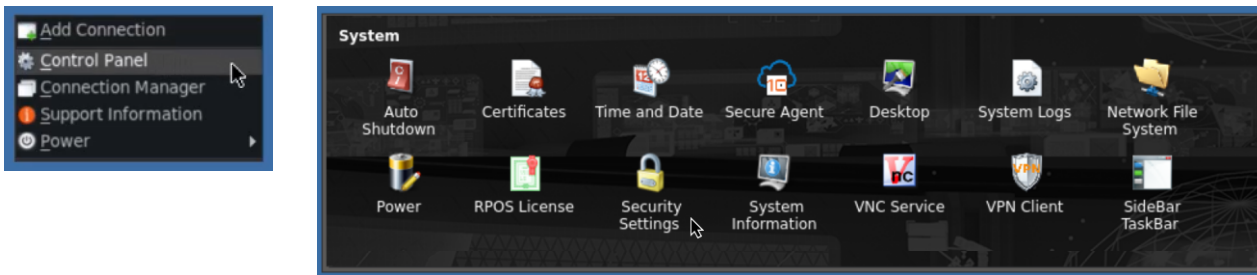
Preparing to reboot the device, following successful installation of RepurpOS.



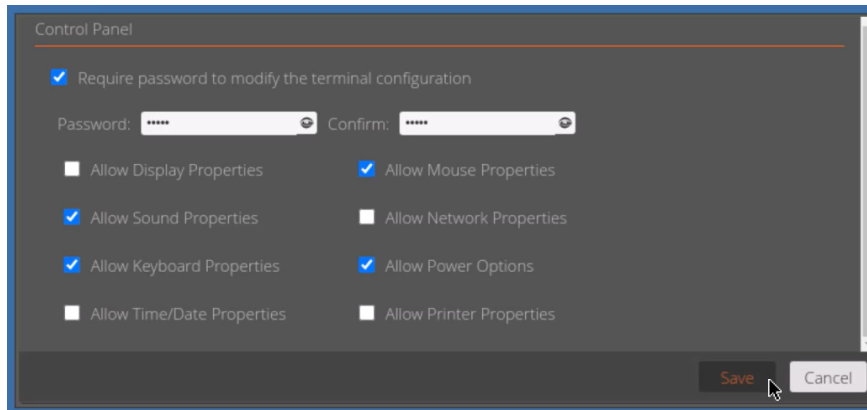
Securing Your RepurpOS Environment

You also have the ability make sure your RepurpOS environment is fully secure, whether it's running "live" from the key or installed to a local drive. Using the methods below, will allow you to lock out the desktop from access to the "Control Panel" any connection options. You can also limit the applications shown on the "Start Menu" too.

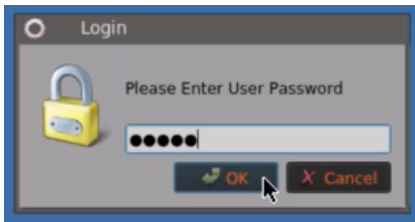
Right click on the desktop and select "Control Panel" and then click on "Security Settings", as shown below.



You can password protect the terminal configuration, so that once it's secure, the operating system cannot be tampered with. Simply tick the box marked "Require password to modify the terminal configuration", key in the password and click "Save".

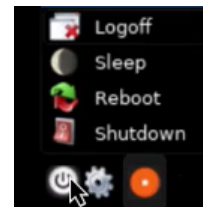
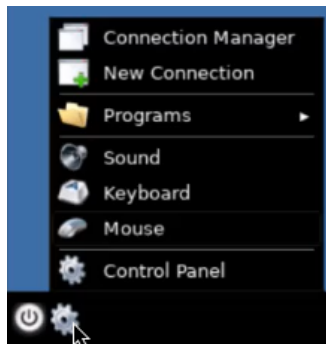


Any attempts to access areas controlled by password protection will prompt for it as shown below, this includes such things as “Connection” maintenance and the “Control Panel” and its applets.



If you wish to allow your users access to specific configuration items even with password protection enabled, then you can tick these items inside the “Security Settings” and they will appear in the menus on the taskbar.

The configuration shown on the previous page will still allow the “Sound”, “Keyboard” and “Mouse” options to be available in the “Gears” menu, and access to “Power” options, even though password protection is switched on.



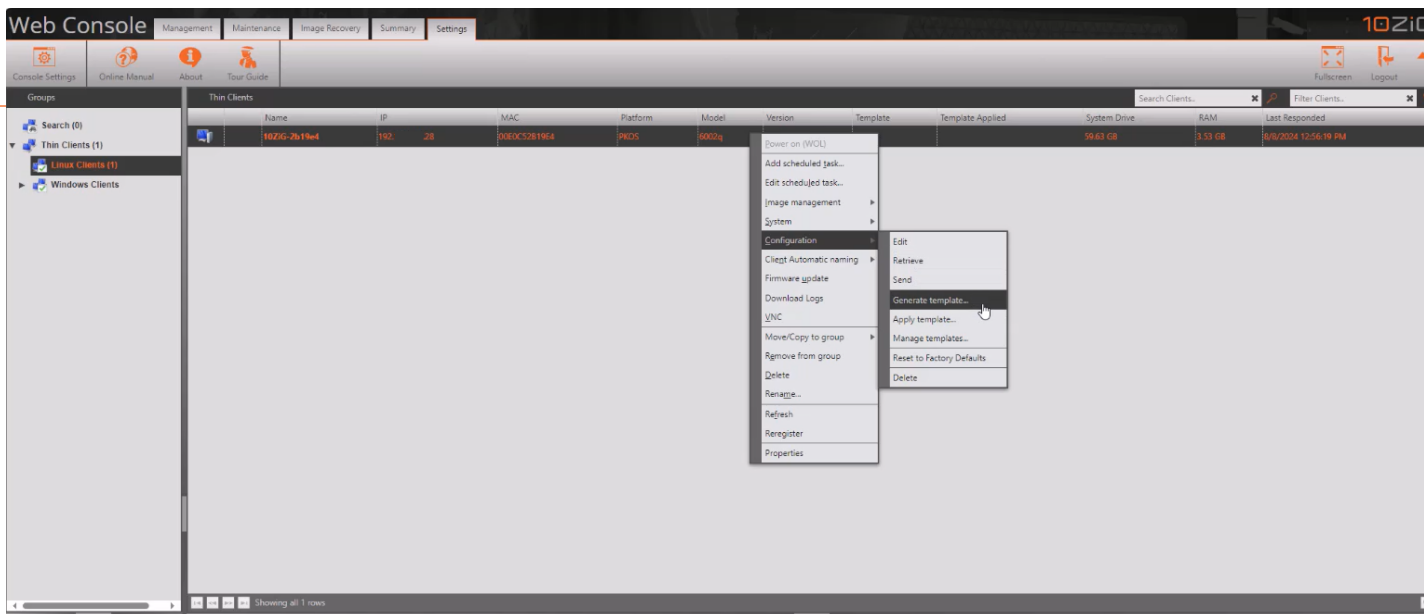
Creating a Template from the RepurpOS USB boot key using the 10ZiG Manager Web Console



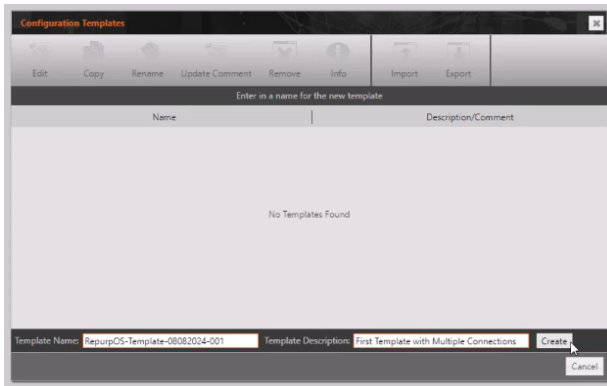
You can take a template image from either your RepurpOS USB boot key or the installed final image using 10ZiG Manager.

This is really useful, if for example, you have a bunch of legacy devices that you want to transform and have finished creating a RepurpOS boot key with all your changes and any apps installed on it.

You can simply boot up with the USB key in “Live” mode, and then inside 10ZiG Manager, create a template that can be used to deploy en-masse to your existing or legacy devices.

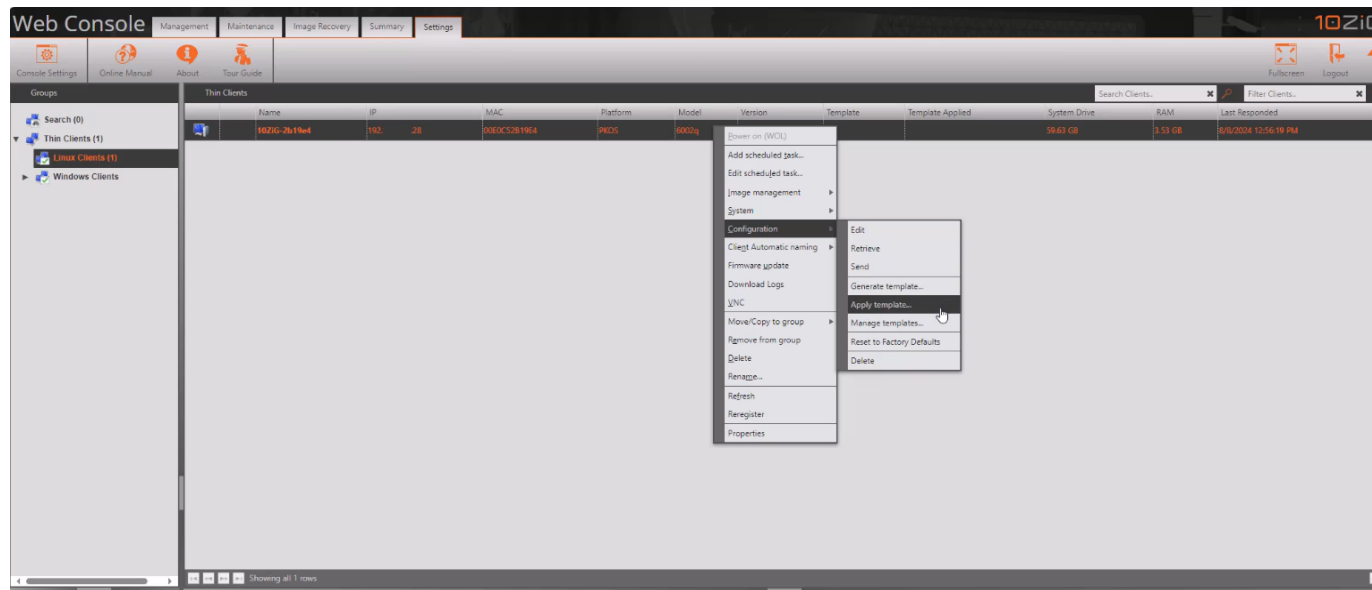
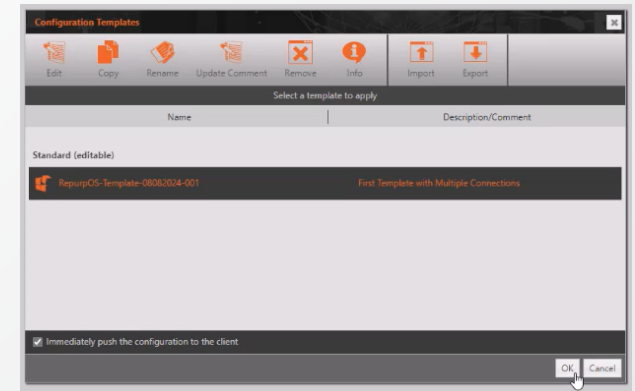


Naming the new template.



Just as simple as it was to create a template, it's just as simple to apply it to your devices. You can apply it to either a single device or multiple devices if you have more than one unit that you want to RepurpOS.

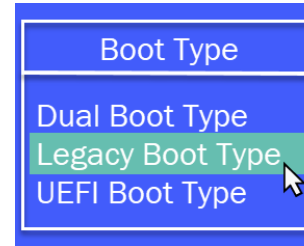
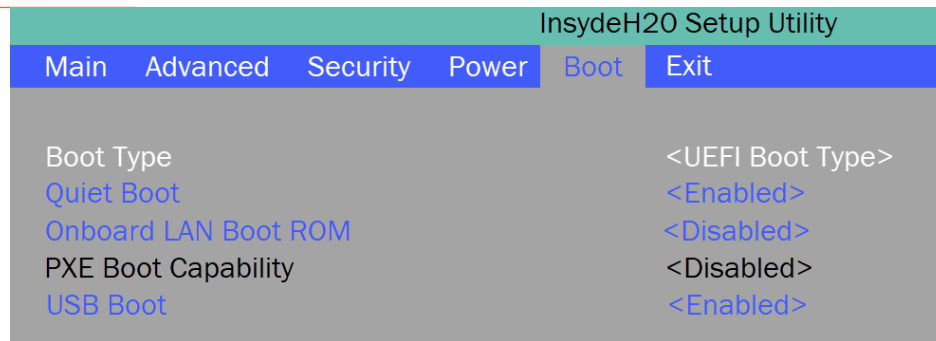
Selecting the template to apply.



UEFI Secure Boot

If your device supports UEFI secure boot then you need to either disable it or set it to “Legacy Boot Type”, as RepurpOS only supports “Legacy Boot”. The example shown below describes how to set a 10ZiG 6100 boot type to “Legacy”.

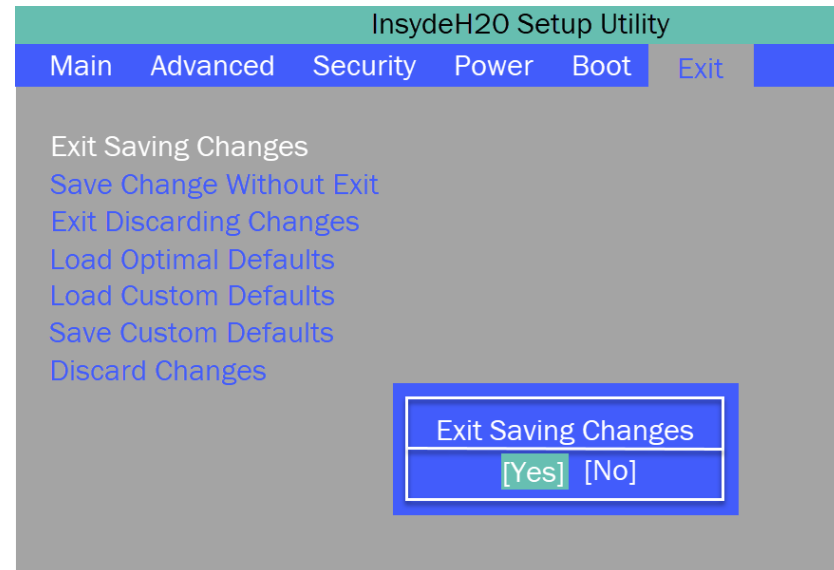
Inside the Setup Utility of the BIOS, your “Boot Type” might show up as “UEFI Boot Type”, as displayed below.



Click on the “UEFI Boot Type” and then when the “Boot Type” type box appears, just highlight, or click on the “Legacy Boot Type” option and press enter.

The “Boot Type” should now show as “Legacy Boot Type” as below.

Once set to “Legacy Boot” press enter and then press “F10”. You’ll be prompted to “Exit Saving Changes” so just press enter and your device will now reboot as a “Legacy” device.



REPURPOS™

www.10ZiG.com

