



Managing 10ZiG RepurpOS Certificate Licensing for 3rd party hardware.

Document and Version Control

Version	Created by	Date	Authorized & checked by
1.0	Jason Hudson	29/09/2023	K. Greenway
2.0	Ed Richardson	06/10/2025	

1.

2.

Contents

1.	About This Document	3
2.	Importing the license certificates using 10ZiG License Manager.....	4
3.	Importing license certificates into RepurpOS on 3 rd party hardware	6
4.	Configuring the “Secure Connector”	7
5.	Generating a template from and applying to 3 rd party hardware	8
1.	Generating a Template.....	8
2.	Applying the previously generated Template.....	9
6.	Support.....	10

1. **About This Document**

This document is a step by step guide on how to license your 10ZiG RepurpOS operating system when used in conjunction with non-10ZiG 3rd party hardware.

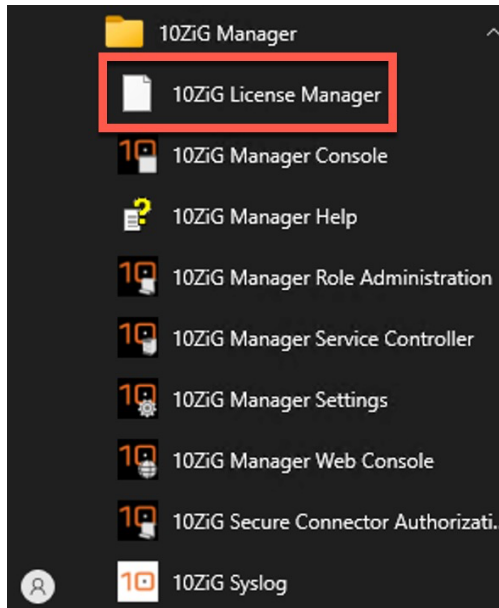
It explains how to import certificate licenses into your 10ZiG Manager Server, how to install them locally on your 3rd party devices and then configure the “Secure Connector” application inside RepurpOS, to enable licensing and take advantage of the particular license model you’ve subscribed to.

Finally, it will explain how to generate a template from your licensed 3rd party device, and then show you how to distribute it to other intended licensed hardware.

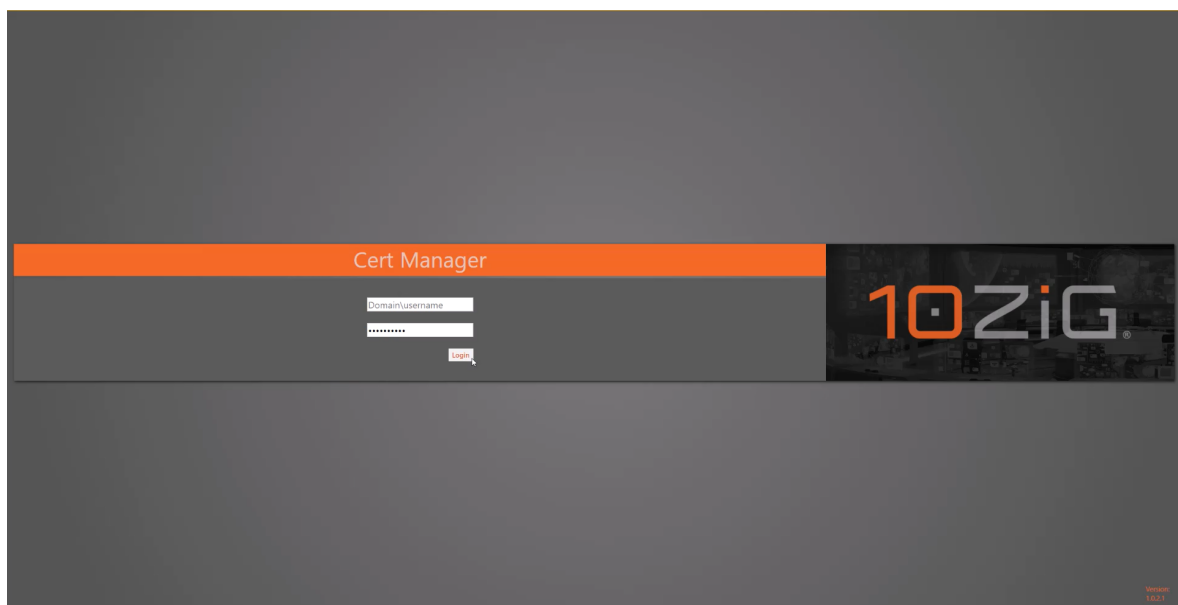
2. Importing the license certificates using 10ZiG License Manager

Before you can use your licenses, you need to import the license certificate(s) using 10ZiG License Manager.

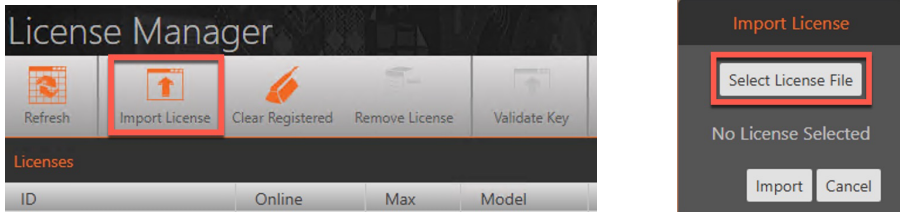
- Click the “Start Menu” and navigate to the “10ZiG Manager” folder.
- Once the contents appear, click on the “10ZiG License Manager”, shown below.



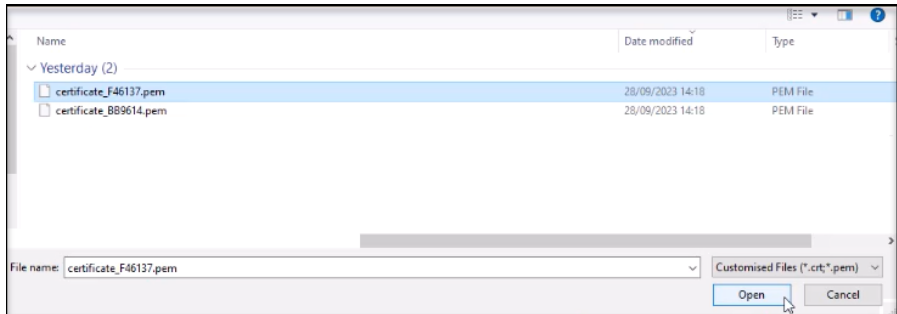
- Type in your “domain name\username”, and password as displayed and click “Login”.



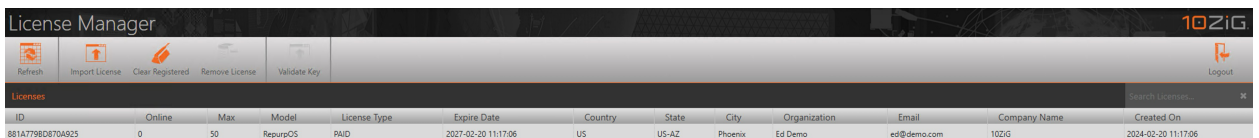
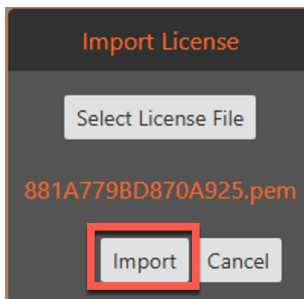
- Once inside the web portal, click the “Import License” button in the top tool bar and then click the “Select License File” button inside the “Import License” dialog box.



- Now you need to navigate to your certificate location, highlight the certificate and click “Open”.



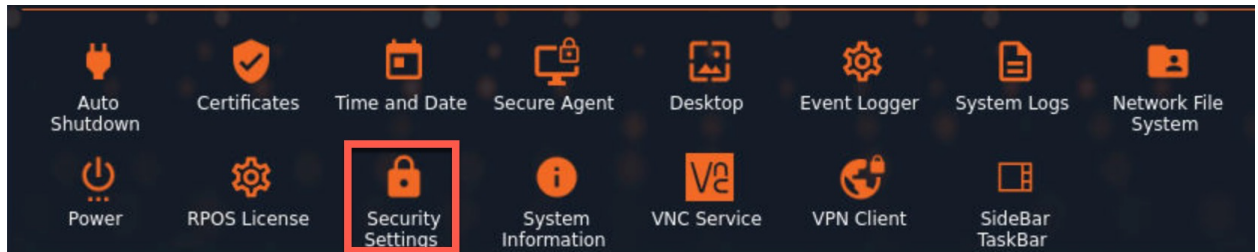
- Once you see the certificate inside the “Import License” dialog box, click the “Import” button and you’ll see your certificate has been loaded successfully, as shown below.



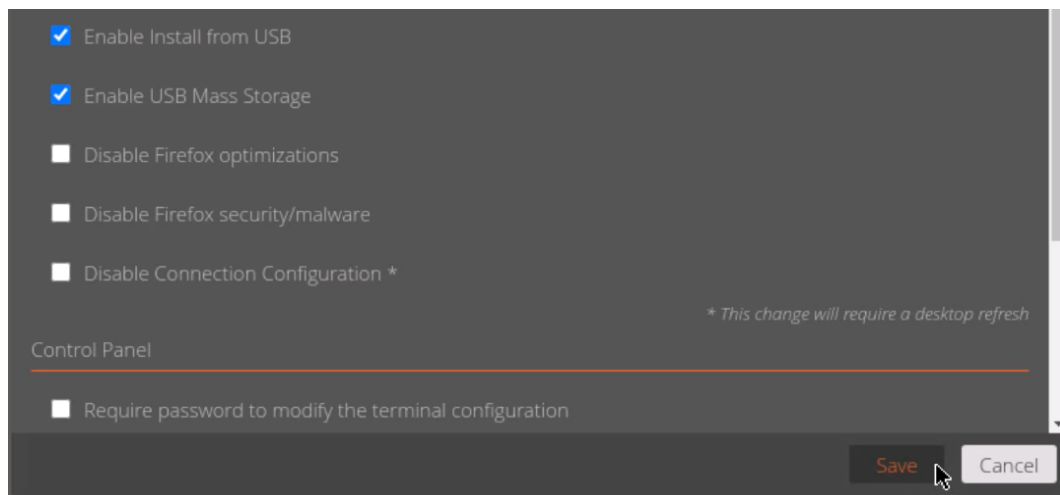
3. Importing license certificates into RepurpOS on 3rd party hardware

Once the certificate has been imported into the 10ZiG License Manager, the certificate must be installed on the thin client. This step will require a USB drive formatted to FAT or FAT32 and the certificate copied into the root path of this USB drive.

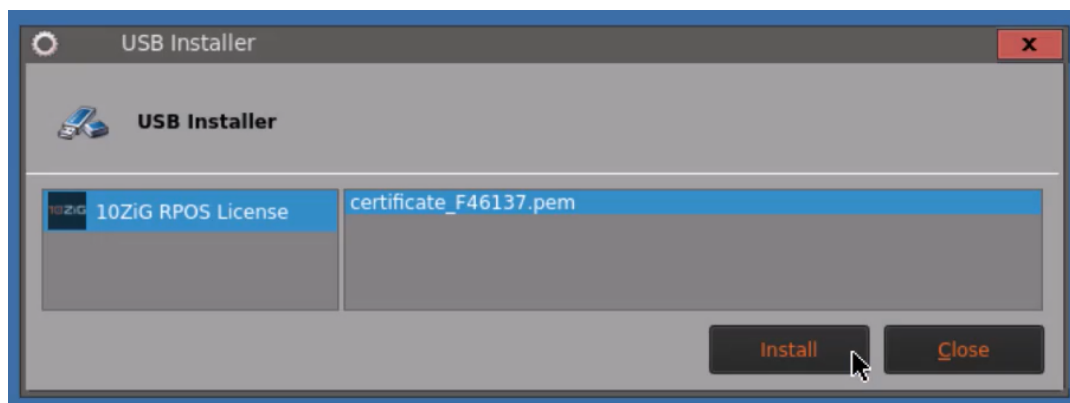
- On the 3rd party client, open the “Control Panel” and then click on the “Security Settings” icon as shown below.



- Once inside here, tick the box labeled “Enable Install from USB” and click “Save”.



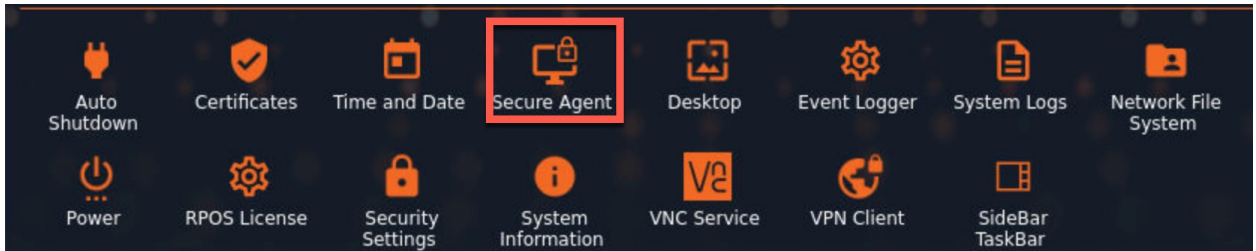
- The next step is to insert the USB drive that contains your license certificate file. Once you do this, a dialog will appear, and your license file will be displayed. Highlight it, click “Install” and your license certificate will be imported.



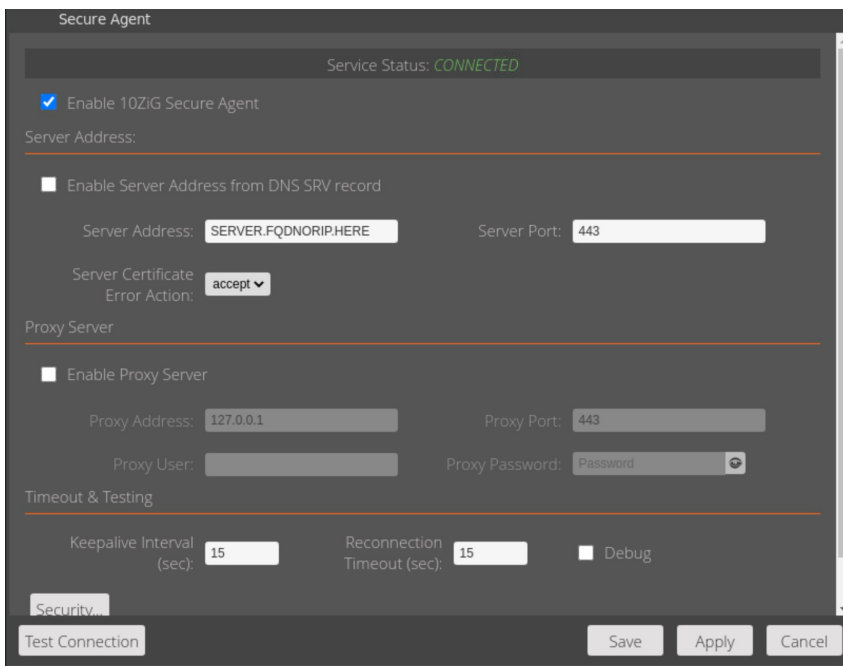
4. Configuring the “Secure Connector”

We mentioned earlier that to take advantage of the licensed features of your RepurpOS, you need to be using the “Secure Connector” to communicate with your 10ZiG Manager Server.

- Go back into the “Control Panel” as before and click on the “Secure Agent” icon.



- Once inside the “Secure Agent” applet, make sure that the box labeled “Enable 10ZiG Secure Agent” is ticked.
- if you are using a DNS SRV record to point to your 10ZiG Manager Server, then leave the “Enable Server Address from DNS SRV Record” box ticked. However, if you don’t use a DNS SRV record, untick this box and then type in the IP address or FQDN of your 10ZiG Manager Server in the “Server Address” field. Once connected to your Manager Server, you should see a green “CONNECTED” Service Status at the top of the screen.
- Finally, click “Save” and you’ll be taken back to the “Control Panel”.

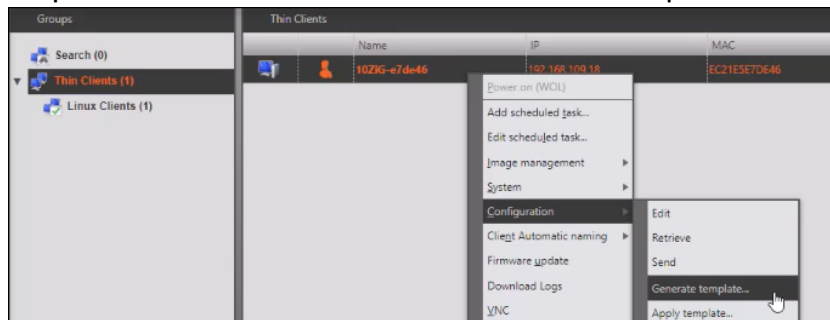


5. Generating a template from and applying to 3rd party hardware

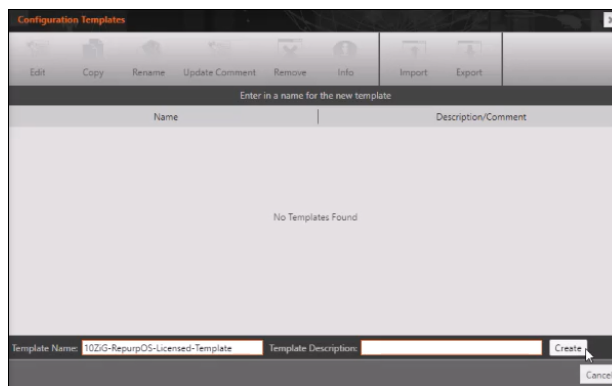
At the start of this guide, we mentioned that you had the ability to generate a template from your licensed 3rd party hardware and then apply this to all your other RepurpOS devices. This can be done quite easily and remotely via the 10ZiG Manager Web Console, as we'll demonstrate in this section.

1. Generating a Template

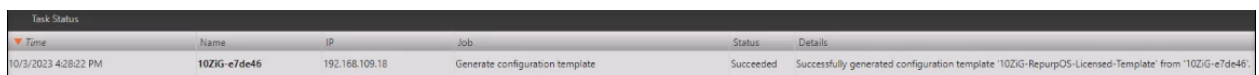
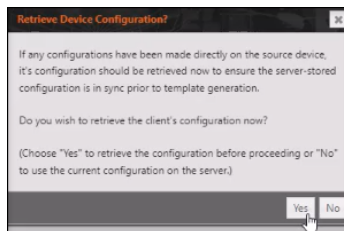
- Inside your 10ZiG Manager Web Console, you need to right-click on the device you want to create a template from, select “Configuration” from the drop-down menu and then click “Generate template”.



- Click “OK” when you see the “Configuration Template Note” message and you will then see a “Configuration Templates” dialog box appear. Type in the name of the new template you want to create and then click “OK” as shown below.

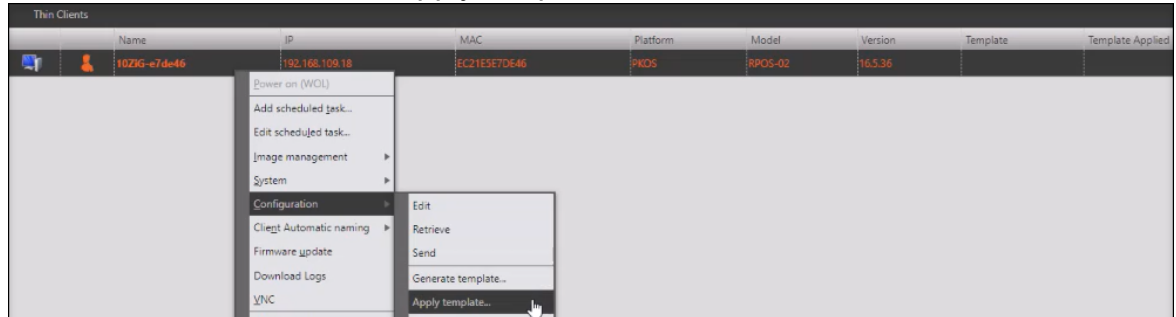


- Click “Yes” when asked to retrieve the device’s configuration and the template will be created as shown in the “Task Status” window below.

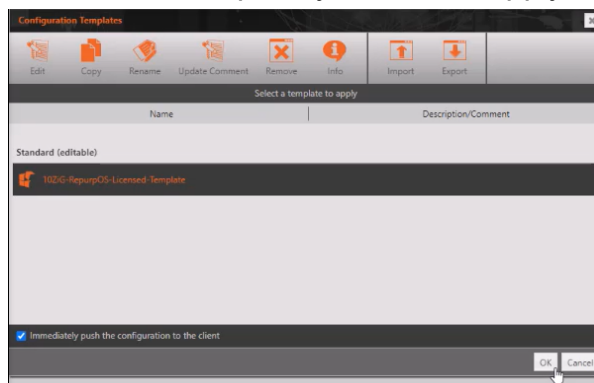


2. Applying the previously generated Template

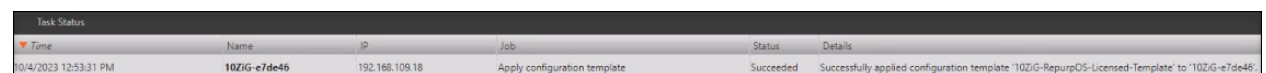
- Inside your 10ZiG Manager Web Console again, you need to right-click on the device you want to send the template to, select “Configuration” from the drop-down menu and then click “Apply template” as below.



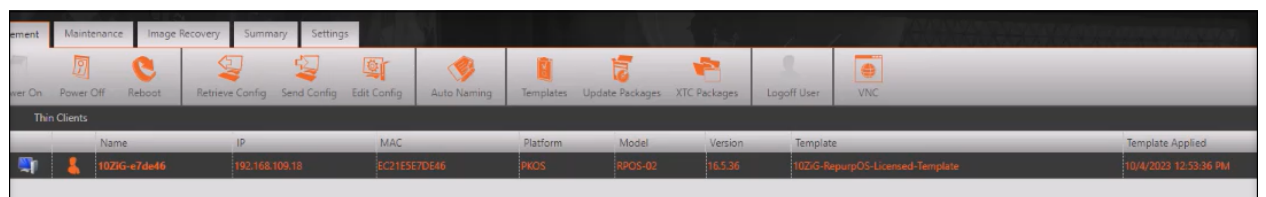
- Click “OK” when you see the “Configuration Template Note” message and you will then see a “Configuration Templates” dialog box appear. Select the name of the template you want to apply and then click “OK” as shown below.



- Once the selected template has been applied to the device, a “Task Status” will show that it was successful.



- If you take a look at the device under the “Thin Clients” list at the top of the Web Console window, you can see that the “Template” and “Template Applied” columns now display recent information relating to the applied template.



6. Support

If you require support for any of the information within this document, please contact your region's nearest Technical Support Center.

10ZiG Technology, Inc.

Headquarters USA (North America)

2043 W Lone Cactus Dr.
Phoenix, AZ 85027

Phone 866-865-5250

support@10zig.com

sales@10zig.com

www.10zig.com

Headquarters UK (EMEA)

10ZiG Technology Limited

7 Highcliffe Road
Leicester
LE5 1TY
UK

Phone +44 (0)116 214 8650

support@10zig.eu

sales@10zig.eu

www.10zig.eu

END OF DOCUMENT